



Innovative Safety Solutions

BOLD STEP® Safety Plates

BOLD STEP® Safety Plates Advantages

Easy to install

**All treads come with
pre-drilled counter
sunk holes**

**Surface can be swept
to remove any loose
dirt**

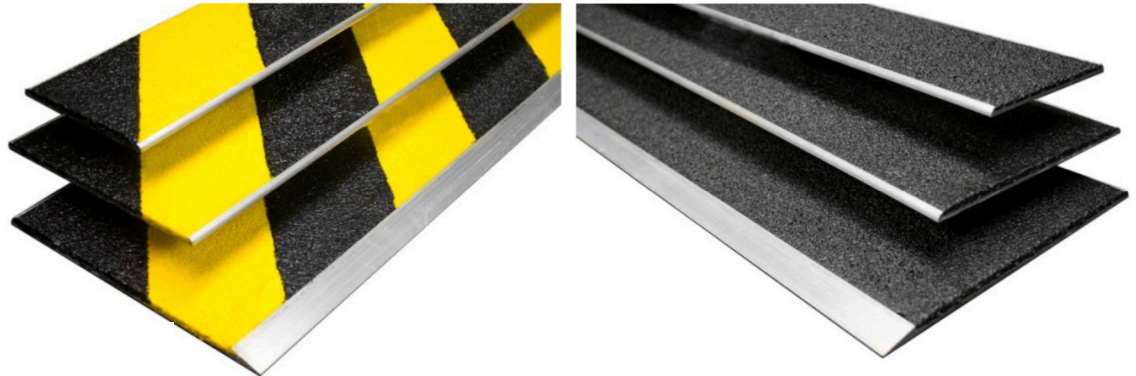
**Treads can be cleaned
using a general
purpose industrial
floor cleaner**

**Available in Black &
Yellow Hazard, Black,
Grey, Yellow, Brown,
Blue, GLOW, Red &
Dark Green**

Visit
www.surefootcorp.com
for additional installation
instructions

Made in USA

**Sure-Foot Industries' BOLD STEP® Safety Plates
are a permanent, attractive solution for worn
problem areas, dangerous steps and slip hazards.**

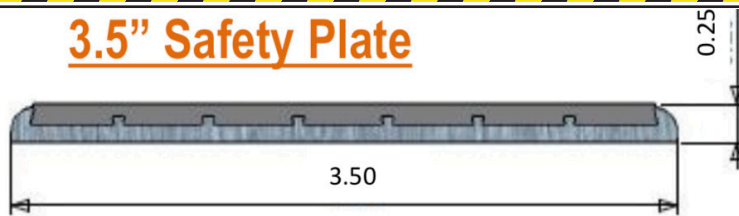


Address slip and fall risks by providing slip-resistant surfaces where safety may be a concern. Our BOLD STEP® Safety Plates and BOLD STEP® Patented Hazard Safety Plates are a permanent, attractive solution for worn flooring problem areas, dangerous steps and slip hazards. Ideal for use on interior or exterior steps and landings. When you need a non-slip tread to draw attention to a slippery area, trust our safety plates. BOLD STEP® is the perfect application for new and existing structures made of wood, concrete, or metal. BOLD STEP® is produced using extruded heat treated exterior grade 6063 T5 aluminum. Our proprietary blend of mineral abrasive grit and epoxy-filler creates an anti-slip surface resistant to marring, scratches and chips.

Sure-Foot Part #	Description	Details
435PS1	3.5" Safety Plate	Specify Color & Length up to 120"
455PS1	5.5" Safety Plate	Specify Color & Length up to 120"
407PS1	7" Safety Plate	Specify Color & Length up to 120"
Grey, Red, Brown, Yellow, GLOW, Black, Blue, Dark Green and Black & Yellow Hazard (Black & Yellow Hazard only available in length up to 96 inches)		

CONTACT US FOR A SAMPLE AT 800-522-6566

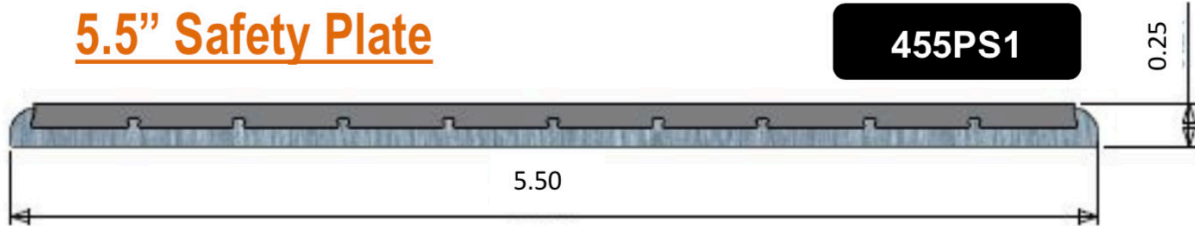
3.5" Safety Plate



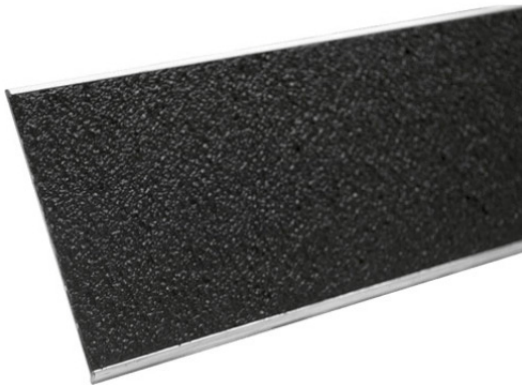
435PS1



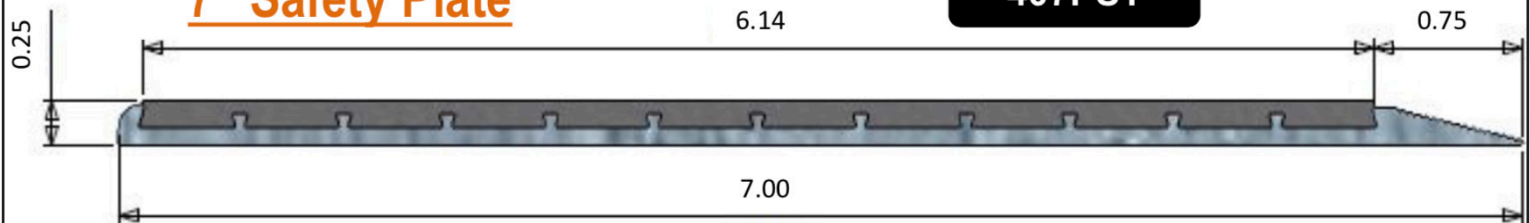
5.5" Safety Plate



455PS1



7" Safety Plate



407PS1

