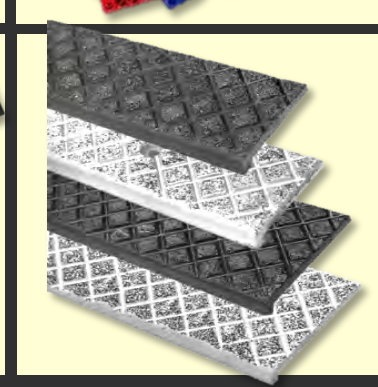
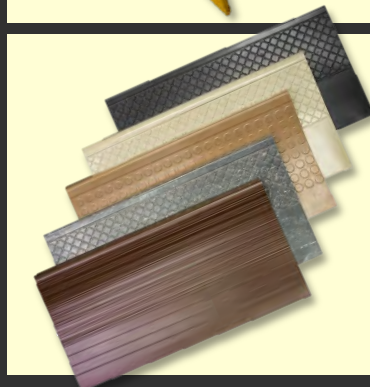
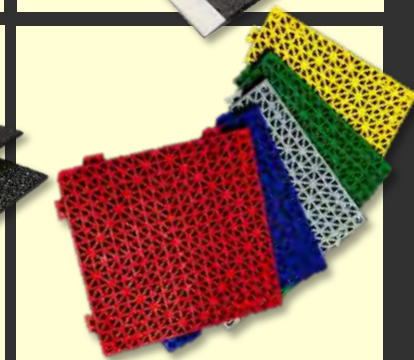
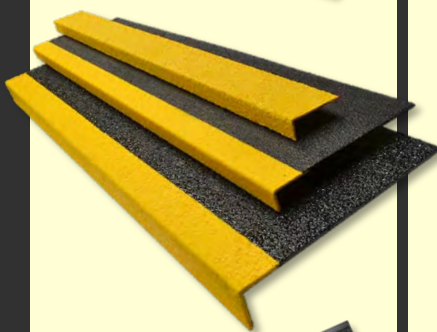
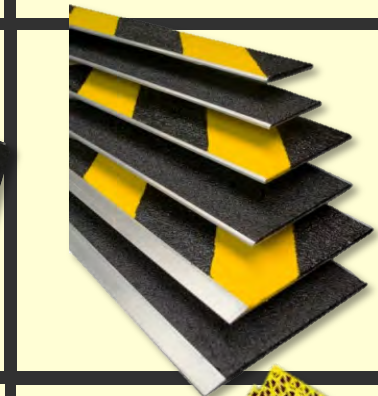
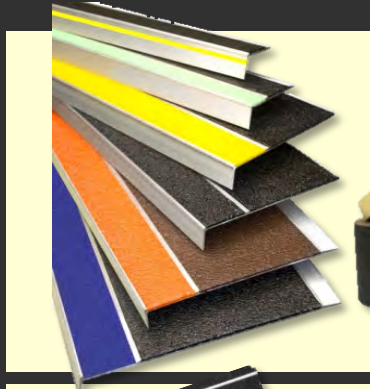


BUYER'S GUIDE

SURE-FOOT



PRODUCTS
TO INSURE
FOOTING

AMERICAN MADE



AMERICAN OWNED

HISTORY

AMERICAN OWNED

FOR OVER 30 YEARS



In 1979, Clarence Haas recognized an opportunity to fill a need within the hotel industry—anti-slip bath tub treads. With his tub treads proving to increase customer safety, Clarence built a reputation for top quality products and exceptional customer service. Starting in a small Cleveland, Ohio office, Clarence began to expand his company into what is now known as Sure-Foot Industries Corporation. Sure-Foot currently houses multiple coating lines and custom anti-slip capabilities in two manufacturing and sales facilities. Sure-Foot Industries' anti-slip product line now includes tapes, aluminum and rubber stair treads, tiles, fiber glass step covers and walkways and aluminum grit-coated panels as well as a mix of custom made items to meet our customers' needs.

Today, Sure-Foot's second generation continues to expand their product line and prepare for the industry's future. Maintaining a commitment to creating the highest quality anti-slip products and a promise to uphold the exceptional customer service instilled over 30 years ago is a top priority for every Sure-Foot team member.



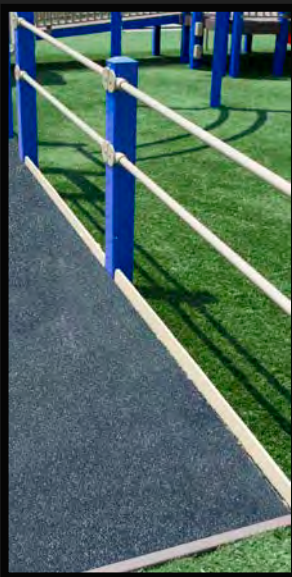
Sure-Foot Industries Corporation is a manufacturer of anti-slip products to insure footing. For over 30 years, Sure-Foot has proudly produced its MASTER STOP and BOLD STEP® product lines in Cleveland, Ohio. With products ranging from anti-slip tapes and grit-coated fiberglass panels to aluminum stair treads and rubber treads & tiles, Sure-Foot Industries is certain to have the solution for slippery problem areas.

The MASTER STOP line from Sure-Foot Industries includes anti-slip tapes, specialty and slogan tape treads and grit-coated PVC tiles. Tapes and tape treads from Sure-Foot are offered in a variety of colors and sizes. Available in die-cuts or rolls, MASTER STOP tapes are versatile enough to fit any application. While the MASTER STOP PVC tiles come in one standard size, their modular design allows for unique shapes and sizes to be created.

Sure-Foot Industries' BOLD STEP® line offers various products to insure safe footing for interior and exterior steps. Renovation stair treads, safety plates, anchor nosings and treads are made of an aluminum extrusion inlayed with mineral epoxy grit. BOLD STEP® products are custom made to meet every customer's specifications. With seven standard colors and a variety of sizes available, customers can create a look that compliments their building's overall appearance while providing maximum anti-slip safety.

The BOLD STEP® line also includes cast aluminum and cast iron abrasive nosing's for installation into wet concrete. MASTER STOP Tape Treads are extruded aluminum inlayed with Sure-Foot's MASTER STOP tapes. Whether it is renovation or new construction, BOLD STEP® & MASTER STOP products offer the very best in anti-slip protection.

Sure-Foot Industries also offers custom anti-slip products outside of the MASTER STOP and BOLD STEP® lines. These products include rubber stair treads, grit-coated fiber glass step covers and walkway panels. Sure-Foot's fiber glass and aluminum grit-coated panels are great for difficult flooring such as mezzanines, ramps, lifts and grated stairs. With their wide array of anti-slip products, Sure-Foot Industries is your one stop shop to insure safe footing.



ABOUT US

AMERICAN MADE



FOR OVER 30 YEARS

Innovative Safety Solutions



MASTER STOP

ANTI-SLIP TAPES & TREADS

SPECIALTY TAPES

REFLECTIVE STRIPE

GLOW STRIPE

MASTER STOP ADVANTAGES:

- Premium products at competitive prices
- Precision cut to tight tolerances
- Variety of grit materials; light - heavy duty
- Special order die-cut pieces available
- Variety of COLORS and custom printing available
- Meets or exceeds OSHA and ADA federal specifications
- Available in widths from ¾" - 48" & lengths up to 500'

Mineral abrasive tapes now include 5 distinct blacks and 11 assorted COLORS including glow-in-the-dark.

Made in U.S.A.



www.surefootcorp.com



ONE STOP FOR THE MOST COMPLETE LINE OF SAFETY TAPES

Master Stop anti-slip tapes are the answer to prevent slips and falls in any environment. Our mineral abrasive anti-slip grit surface offers the traction you need while our pressure sensitive adhesive offers the versatility to be applied in both interior and exterior applications.

Please give us a call at 800-522-6566

**DURABLE TAPES BACKED BY
EXCEPTIONAL SERVICE**

SLOGAN & SPECIALTY TREADS



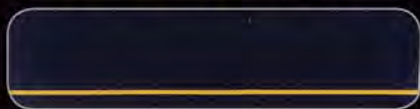
6" x 24" Anti-Slip Treads



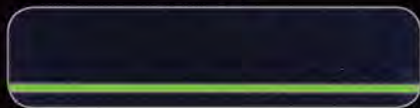
**Also available in:
BLACK / YELLOW
Hazard**



**Black with
Reflective Stripe**



**Glow-in-the-Dark
Stripe**



American Made



**and
American Owned for
more than 30 years**

Designed with the end user in mind, we have created a line of anti-slip tapes that are versatile enough to solve any slip problem. Master Stop anti-slip tapes are available in a wide variety of sizes, colors and shapes allowing you to create visual awareness in areas that require extra attention.

Rolls:		Die Cuts:		Colors:
Dimensions	Qty per Case	Dimensions	Qty per Case	01 – White
1" x 60'	12 rolls	5.5" x 5.5" Sq	50 pcs	03 – Gray
2" x 60'	6 rolls	¾" x 24"	50 pcs	04 – Brick Red
3" x 60'	4 rolls	2" x 24"	50 pcs	05 – Clear
4" x 60'	3 rolls	6" x 24"	50 pcs	06 – Brown
6" x 60'	2 rolls			07 – Beige
8" x 60'	1 roll			08 – Yellow
12" x 60'	1 roll			09 – Heavy Duty Black
18" x 60'	1 roll			10 – Glow in the Dark
24" x 60'	1 roll			15 – Safety Red
36" x 60'*	1 roll			17 – Black/Yellow Hazard
48" x 60'*	1 roll			18 – Red/White Hazard
				19 – Standard Black

*This size only available in 19-Black

Our Specialty treads are a unique product that offers added safety and visibility while our Reflective and Glow Stripe treads help increase awareness in poorly lit areas. Slogan treads convey a message of "Caution", "Watch your Step" or "Slippery When Wet". All Specialty treads are offered in precut sizes for your convenience and easy installation.

Die Cuts:	Qty/ Case	Colors:
6" x 24"	12 pcs	12 – Reflective Stripe
	24 pcs	13 – Glow Stripe
	50 pcs	22 – Caution
		25 – Watch Your Step
		27 – Mop-Top Black
		28 – Mop-Top Gray
		33 – Slippery When Wet
		34 – Mop-Top White



Mop-Top® anti-slip tapes are designed for areas that require constant cleaning. Created with rounded grit, your mop or sponge will glide over the surface, removing dirt and debris without leaving particles behind. Offered in black, gray and white, this product is available in all of our standard shapes and sizes. As with everything we do, custom is not a problem, just let us know!



Technical Data

Product Description:

Mineral abrasive grit coated polyester film, one side pressure sensitive adhesive with removable liner

Compatibility:

Clean dry surface, sealed concrete, painted metal, sealed wood

Application:

Apply when surface temp is above 50° F

Standard Roll Sizes:

Widths ¾", 1", 2", 3", 4", 6", 12", 18", 24"
Lengths 60'

Call for a Sample: (800) 522-6566

20260 First Avenue · Cleveland, OH 44130 · (440) 234-4446 · (800) 522-6566 · Fax: (440) 234-9098

Visit us @ www.surefootcorp.com



MASTER STOP

MASTER STOP Safety Tapes & Treads

Master Stop Safety Tapes and Treads are the answer to slip and fall problems in any environment. Varieties of grit materials, colors and sizes are available to meet specific needs. All tapes and treads meet and exceed OSHA and ADA federal standards.

Master Stop Safety Tapes and Treads are made with a mineral abrasive grit-coated polyester film to provide maximum traction. The pressure sensitive adhesive backing with removable liner offers the versatility to be applied in both interior and exterior applications.

Master Stop Safety Tapes



Master Stop Specialty Treads



Sure-Foot Industries Corp. • 20260 First Ave. • Cleveland, OH • 44130
800-522-6566 • www.surefootcorp.com

MASTER STOP SAFETY TAPE STANDARD SIZES			
Sure-Foot Part #	Size (in rolls)	Items per Case	Case Weight
880--	¾" x 60'	16	15#
881--	1" x 60'	12	15#
882--	2" x 60'	6	15#
883--	3" x 60'	4	15#
884--	4" x 60'	3	15#
886--	6" x 60'	2	15#
892--	12" x 60'	1	15#
893--	18" x 60'	1	22#
894--	24" x 60'	1	30#

MASTER STOP SAFETY TAPE DIE-CUT PIECES			
Sure-Foot Part #	Size	Items per Case	Case Weight
828--	5.5" Square	50	3#
829--	5.5" Round	50	3#
823--	¾" x 12"	50	1#
826--	1" x 12"	50	2#
824--	¾" x 18"	50	2#
825--	¾" x 24"	50	2#
842--	2" x 24"	50	4#
843--	3" x 24"	50	7#
846--	6" x 24"	50	12#
847--	6" x 24"	24	6#



MASTER STOP SLOGAN TREADS			
Sure-Foot Part #	Size	Items per Case	Case Weight
846--	6" x 24"	50	13#
847--	6" x 24"	24	6#

MASTER STOP HIGH VISIBILITY TREADS			
Sure-Foot Part #	Size	Items per Case	Case Weight
828--	5.5" Square	50	3#
846--	6" x 24"	50	13#
847--	6" 24"	24	6#

Sure-Foot Industries Corp. • 20260 First Ave. • Cleveland, OH • 44130
800-522-6566 • www.surefootcorp.com

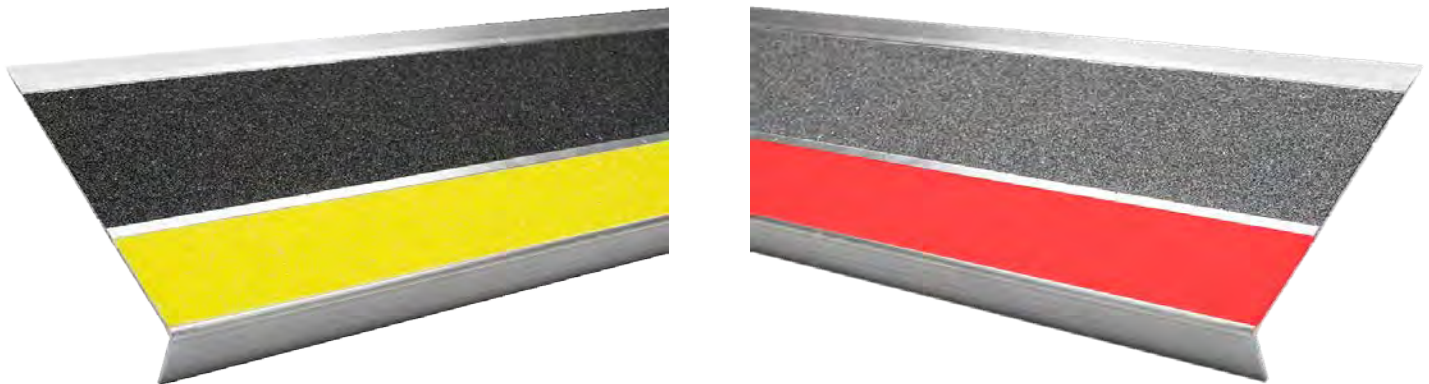
MASTER STOP Aluminum Tape Treads

MASTER STOP Aluminum Tape Treads are a quick, permanent and attractive solution for stair renovation projects. With 3 distinct blacks and 11 assorted colors (including glow-in-the-dark), customizing to your exact needs is simple.

MASTER STOP Aluminum Tape Treads are heat treated extruded 6063 T5 exterior grade aluminum inlaid with Master Stop mineral abrasive grit-coated polyester film.

7.5" Aluminum Tape Tread

475NT2



The full line of Master Stop tapes is available for inlay—providing a variety of colors, grit materials and custom printing capabilities.



Sure-Foot Industries Corp. • 20260 First Ave. • Cleveland, OH • 44130
800-522-6566 • www.surefootcorp.com



Sure-Foot Part #	Description	
475NT2	7.5" Aluminum Tape Tread	Specify Color & Length up to 120"
BLACK • WHITE • GREY • BRICK RED • CLEAR • BROWN BEIGE • SAFETY YELLOW • GLOW • SAFTEY RED BLACK/YELLOW HAZARD • RED/WHITE HAZARD • MOP TOP BLACK, GREY or WHITE		

INSTALLATION

MASTER STOP Aluminum Stair Treads are made to order and ready to install upon delivery. All treads come with pre-drilled counter-sunk holes. For concrete and wood applications, use stainless steel #10 screws. For steel applications, use a stainless steel machine screw-- all screws should be 1 ¼" – 1 ½" in length. Commercial adhesive such as Liquid Nail should be used when installing the MASTER STOP treads to create a gasket between the tread and the step surface. Surface must be level, smooth, dry and clean of debris. Treads should not be installed when surface temperatures are below adhesive recommendations.

ARCHITECTURAL SPECIFICATIONS

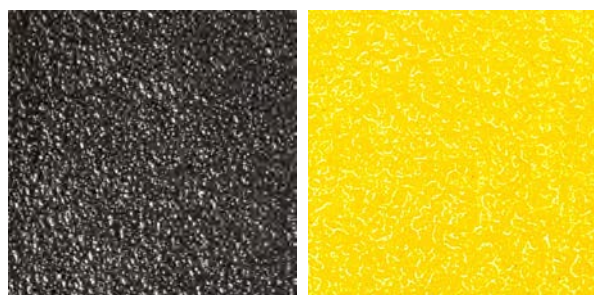
All aluminum tape treads shown in the finish schedule or listed in this specification shall be **MASTER STOP** Aluminum Tape Treads as furnished by **Sure-Foot Industries Corp.** located in Cleveland, Ohio. Products shall be constructed of heat treated exterior grade 6063 T5 aluminum and inlayed with Master Stop Anti-Slip Tapes. Treads are uniform throughout providing anti-slip properties. Shall be constructed of first quality materials and will be smooth, free of imperfections which detract from its appearance and contain no asbestos fiber. MASTER STOP Aluminum Stair Treads shall be 0.25" (6.35 mm) nominal thickness, _____" (____mm) in nominal depth, _____" (____mm) in nominal length, in either single color or color combinations stated and shall conform to industry standards.

MASTER STOP™ EXTREME Tapes & Treads

Master Stop™ Extreme tapes & treads are Sure-Foot's strongest peel and stick products. From offshore marine applications to the transportation industry, this specially designed pressure sensitive adhesive material is capable of preventing slips, trips, and falls in the harshest environments.

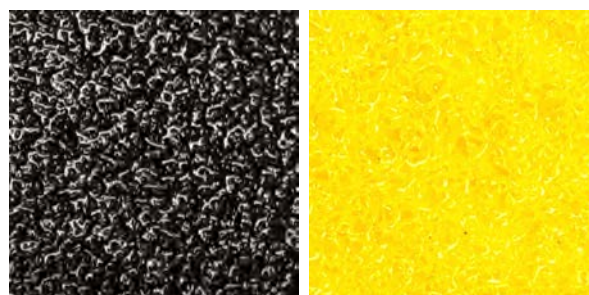


Made with a proprietary formula, Master Stop™ Extreme tapes & treads are specifically designed to out-perform standard anti-slip tapes. Master Stop™ Extreme's multi-climate durable design is ideal for demanding applications where safety is a must.



Black and Safety Yellow

Standard Grit Coating



Black and Safety Yellow

Coarse Grit Coating



Master Stop™ Extreme tapes & treads are recommended for use in offshore marine applications, oil and gas rigs, heavy traffic areas, work areas, loading docks, stairways, ramps, walkways, bleachers, and heavy equipment.

Sure-Foot Industries Corp. • 20260 First Ave. • Cleveland, OH • 44130
800-522-6566 • www.surefootcorp.com



Master Stop™ Extreme tapes & treads feature several exceptional qualities that make these products the best choice for added safety and longevity:

- Adhesive bond is 3 times stronger than standard anti-slip tapes
- Multi-layer grit embedding process lengthens product life
- Simple peel and stick installation: simply peel and stick to any clean dry surface
- Easy to cut and trim
- Useful temperature range of -40°F to +220°F (when applied properly per installation instructions)
- Tolerates steam cleaning, detergent cleaning, and low PSI pressure washing
- Essentially unaffected by oil, grease, saltwater, mild acid, or alkali exposure under normal conditions
- Minimum shelf life of two years
- Exceeds OSHA and ADA recommendations for Coefficient of Friction

AMERICAN MADE



AMERICAN OWNED

Sure-Foot Industries Corp. • 20260 First Ave. • Cleveland, OH • 44130
800-522-6566 • www.surefootcorp.com



Innovative Safety Solutions



BOLD STEP®

**RENOVATION TREADS
ANCHOR TREADS
FLAT SAFETY PLATES**

Worn problem areas?

Dangerous steps?

Slip hazards?

Bold Step™ aluminum extrusions are a permanent attractive solution. Ideal for use on interior or exterior steps and landings. Our superior **Bold Step™** coating system resists chips, dirt, scratches, stains and oils unlike open cell porous products. Periodic washing is all it takes to keep your steps looking new.

Customize our extrusions to give a distinct look and feel to match the overall design of your building.

Made in U.S.A.



www.surefootcorp.com

Bold Step™ is an eye catching, resilient, anti-slip product for use on steps that require an anti-slip surface. Either used in new construction or renovation projects, our treads and nosings deliver maximum safety and durability while providing a look to compliment today's building designs. **Bold Step™** is strong enough for industrial applications but attractive enough to be used at your residence.

Industry Leading Technology:

- Patented Hazard Stripe Treads
- Patent Pending Message Treads
- Exceeds OSHA & ADA Requirements

Features:

- Corrosive Resistant Extruded Aluminum
- Abrasive Closed Cell Epoxy Filler
- Easy to Install
- Easy to Maintain

Variety of Products:

- New Construction
- Renovation
- Flat Safety Plate
- Sizes from 3/4" to 11" Depth
- Lengths up to 10'
- 7 Standard Colors, Custom Colors Available

As the industry leader with the most innovative products, we enable you to design the **Bold Step™** solution that meets your needs.

Our highly dedicated staff listens and works with you throughout the entire project to ensure your total satisfaction.

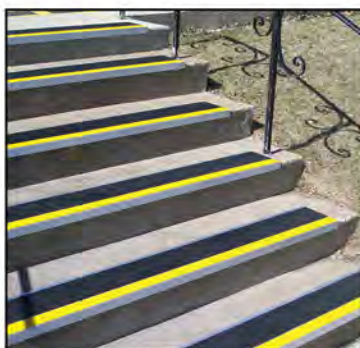
Call for a Sample (800) 522-6566

Take a Step in the Right Direction

Promote safety ... choose **BOLD STEP®**

- All treads are pre-drilled with countersunk holes
- Fasteners available
- Custom miter cut-outs

Bold Step™ is the perfect application for new and existing structures made of wood, concrete or metal. **Bold Step™** is produced using extruded heat treated exterior grade 6063 T5 aluminum. Our proprietary blend of mineral abrasive grit and epoxy-filler creates an anti-slip surface resistant to marring, scratches and chips.



Bold Step™ treads and nosings meet or exceed recommended values for slip resistance on wet and dry surfaces.



- 003 - GRAY
- 004 - RED
- 006 - BROWN
- 008 - YELLOW
- 010 - GLOW
- 019 - BLACK
- 023 - BLUE
- 024 - DARK GREEN

Bold Step™ glow-in-the-dark message treads identify your location when you need it most. Your message is encapsulated within our coating system ensuring it remains visible for the life of the product. Messages can contain company logos, safety slogans or location.



With Sure-Foot Industries, every project is a collaborative effort. Our design team is here to assist you.

American Made



and
American Owned for
more than 30 years

20260 First Avenue • Cleveland, OH 44130 • (440) 234-4446 • (800) 522-6566 • Fax: (440) 234-9098

Visit us @ www.surefootcorp.com

Call for a Sample: (800) 522-6566



GLOW Bold Step™

Easy to recharge with either natural light or any interior light source. Our Glow Bold Step™ will light the way in total darkness.

Designed with safety in mind, our products surpass illumination requirements.

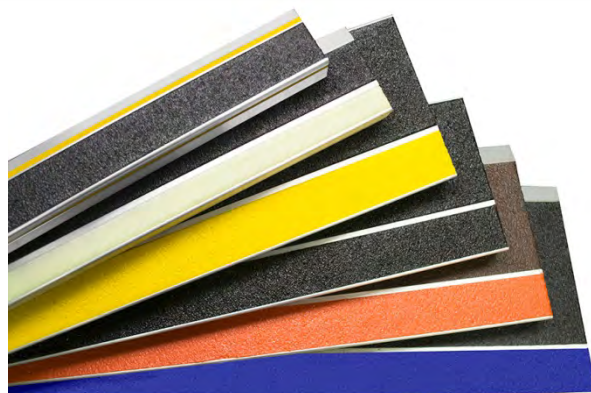
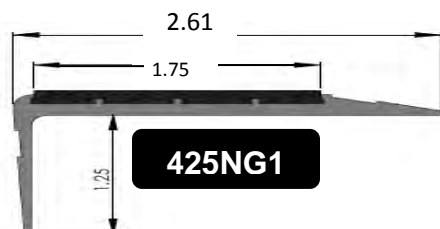


lights on

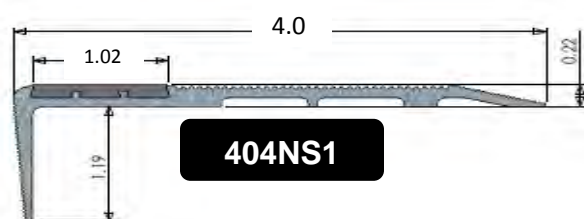
BOLD STEP® Renovation Stair Treads

2.5" Single Cavity

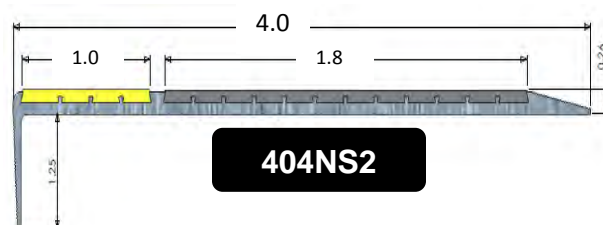
[Available with Reflective Stripe Insert]



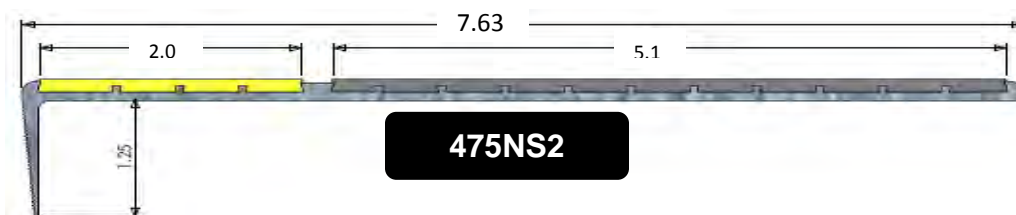
4" Single Cavity



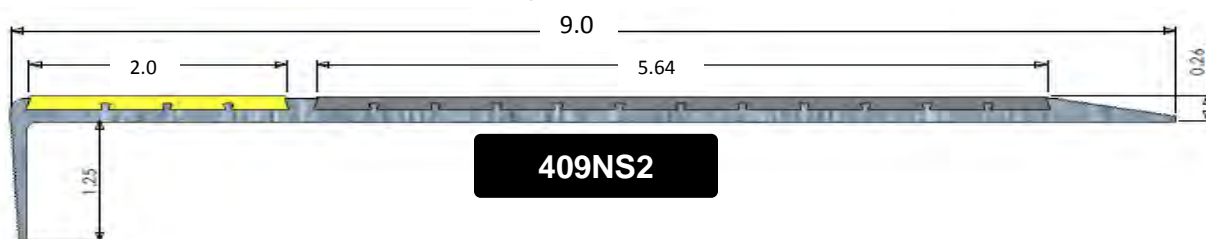
4" Double Cavity



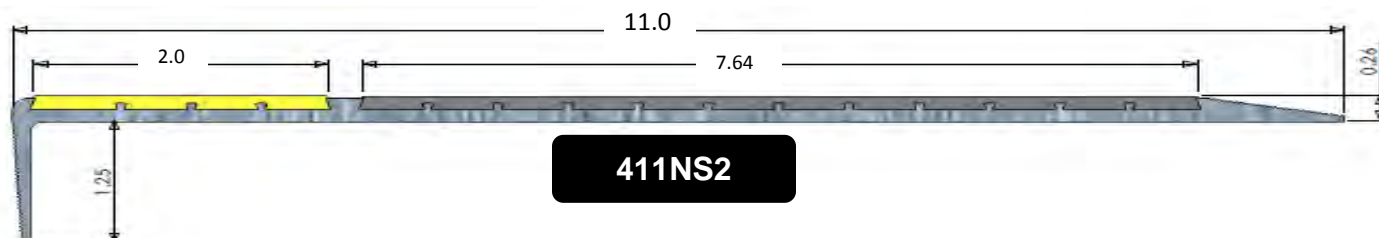
7.5" Double Cavity [Available with Reflective Stripe Insert]



9" Double Cavity [Available with Reflective Stripe Insert]



11" Double Cavity



BOLD STEP®



Sure-Foot Part #	Description	
425NG1	2.5" Tread	Specify Color & Length up to 120"; optional stripe
404NS1	4" Tread; Single Cavity	Specify Color & Length up to 120"
404NS2	4" Tread; Double Cavity	Specify Color & Length up to 120"
475NS2	7.5" Tread; Double Cavity	Specify Color & Length up to 120"
409NS2	9" Tread; Double Cavity	Specify Color & Length up to 120"
411NS2	11" Tread; Double Cavity	Specify Color & Length up to 120"
All NS2 treads are available in 2 color combinations to meet ADA recommendations		
GREY • RED • BROWN • YELLOW • GLOW • BLACK • BLUE • DARK GREEN		

INSTALLATION

BOLD STEP® is made to order and ready to install upon delivery. All treads come with pre-drilled counter-sunk holes. For concrete and wood applications, use stainless steel #10 screws. For steel applications, use a stainless steel machine screw-- all screws should be 1 ¼" – 1 ½" in length. Commercial adhesive such as Liquid Nail should be used when installing the BOLD STEP® tread to create a gasket between the tread and the step surface. Surface must be level, smooth, dry and clean of debris. Treads should not be installed when surface temperatures are below adhesive recommendations.

MAINTENANCE

Surface can be swept to remove and loosen dirt. Treads can be cleaned using a general purpose industrial floor cleaner. For encrusted dirt, use a stiff bristled brush with industrial cleaner. Treads can be pressure sprayed up to 1000 psi. Aluminum Nose: For spots, marks and scuffs, use green Scotch-Brite pad. Polish in length-wise direction.

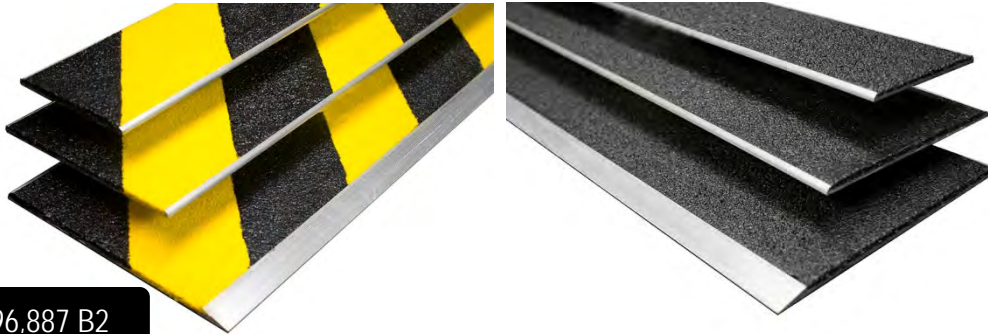
ARCHITECTURAL SPECIFICATION

All aluminum treads shown in the finish schedule or listed in this specification shall be **BOLD STEP®** stair treads as furnished by **Sure-Foot Industries Corp.** located in Cleveland, Ohio. Products shall be constructed of heat treated exterior grade 6063 T5 aluminum and filled with chemical resistant closed cell anti-slip epoxy coating combined with mineral abrasive grits which are uniform throughout providing anti-slip properties. Shall be constructed of first quality materials and will be smooth, free of imperfections which detract from its appearance and contain no asbestos fiber. BOLD STEP® stair treads shall be 0.25" (6.35 mm) nominal thickness, _____" (____mm) in nominal depth, _____" (____mm) in nominal length, in either single color or color combinations stated and shall conform to industry standards.

Sure-Foot Industries Corp. • 20260 First Ave. • Cleveland, OH • 44130
800-522-6566 • www.surefootcorp.com

BOLD STEP® Safety Plates

BOLD STEP® Safety Plates are a permanent, attractive solution for worn problem areas, dangerous steps and slip hazards. Ideal for use on interior or exterior steps and landings.



Patent US 6,996,887 B2

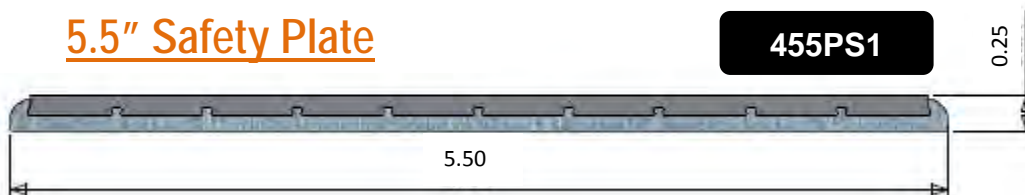
BOLD STEP® is the perfect application for new and existing structures made of wood, concrete, or metal. BOLD STEP® is produced using extruded heat treated exterior grade 6063 T5 aluminum. Our proprietary blend of mineral abrasive grit and epoxy-filler creates an anti-slip surface resistant to marring, scratches and chips.

3.5" Safety Plate



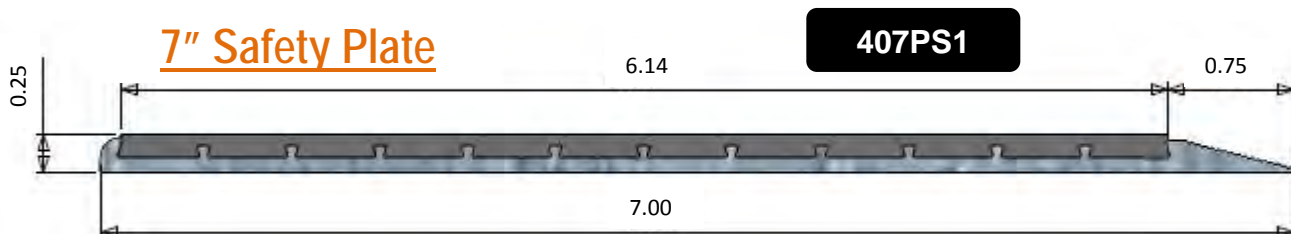
435PS1

5.5" Safety Plate



455PS1

7" Safety Plate



407PS1

Sure-Foot Industries Corp. • 20260 First Ave. • Cleveland, OH • 44130
800-522-6566 • www.surefootcorp.com

BOLD STEP®



Sure-Foot Part #	Description	
435PS1	3.5" Safety Plate	Specify Color & Length up to 120"
455PS1	5.5" Safety Plate	Specify Color & Length up to 120"
407PS1	7" Safety Plate	Specify Color & Length up to 120"
GREY • RED • BROWN • YELLOW • GLOW • BLACK • BLUE • DARK GREEN • HAZARD		

INSTALLATION

BOLD STEP® is made to order and ready to install upon delivery. All plates come with pre-drilled counter-sunk holes. For concrete and wood applications, use stainless steel #10 screws. For steel applications, use a stainless steel machine screw-- all screws should be 1 ¼" – 1 ½" in length. Commercial adhesive such as Liquid Nail should be used when installing the BOLD STEP® plates to create a gasket between the tread and the step surface. Surface must be level, smooth, dry and clean of debris. Plates should not be installed when surface temperatures are below adhesive recommendations.

MAINTENANCE

Surface can be swept to remove and loosen dirt. Plates can be cleaned using a general purpose industrial floor cleaner. For encrusted dirt, use a stiff bristled brush with industrial cleaner. Treads can be pressure sprayed up to 1000 psi. Aluminum: For spots, marks and scuffs, use green Scotch-Brite pad. Polish in length-wise direction.

ARCHITECTURAL SPECIFICATION

All aluminum plates shown in the finish schedule or listed in this specification shall be **BOLD STEP®** Safety Plates as furnished by **Sure-Foot Industries Corp.** located in Cleveland, Ohio. Products shall be constructed of heat treated exterior grade 6063 T5 aluminum and filled with chemical resistant closed cell anti-slip epoxy coating combined with mineral abrasive grits which are uniform throughout providing anti-slip properties. Shall be constructed of first quality materials and will be smooth, free of imperfections which detract from its appearance and contain no asbestos fiber. BOLD STEP® Safety Plates shall be 0.25" (6.35 mm) nominal thickness, _____" (____mm) in nominal depth, _____" (____mm) in nominal length, in either single color or color combinations stated and shall conform to industry standards.

Sure-Foot Industries Corp. • 20260 First Ave. • Cleveland, OH • 44130
800-522-6566 • www.surefootcorp.com

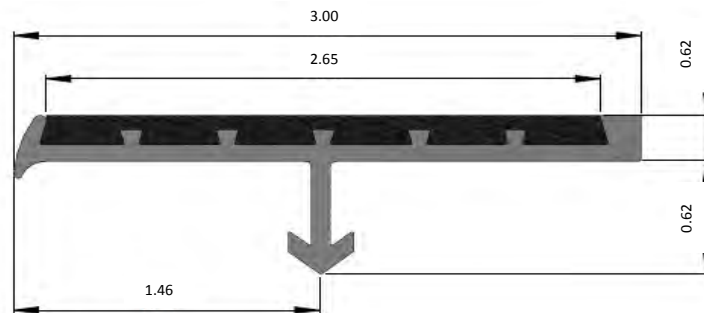
BOLD STEP® Anchor Nosings & Treads

BOLD STEP® Anchor Systems can be used for poured & precast concrete, steel-pan cement filled stairs and terrazzo stairs.

BOLD STEP® is an aluminum extrusion inlayed with our proprietary mineral abrasive anti-slip epoxy-filler offered in a variety of colors and sizes. Either used in new construction or renovation projects, our nosings and treads deliver maximum safety and durability while providing a look to compliment today's building designs.

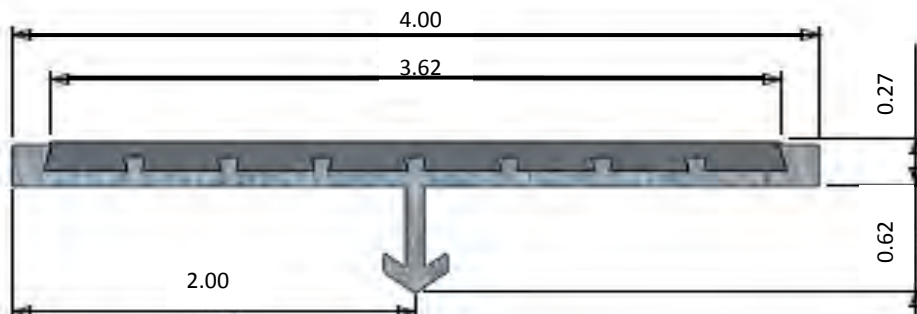
3" Bullnose

403AB1



4" Straight Edge

404AF1



Sure-Foot Item #	Description	
403AB1	3" Bullnose with Anchor	Specify Color & Length up to 120"
404AF1	4" Straight Edge with Anchor	Specify Color & Length up to 120"
GREY • RED • BROWN • YELLOW • GLOW • BLACK • BLUE • DARK GREEN		

Sure-Foot Industries Corp. • 20260 First Ave. • Cleveland, OH • 44130
800-522-6566 • www.surefootcorp.com

BOLD STEP®



INSTALLATION

Avoid the use of very large aggregate in concrete mix. Avoid using concrete with very low slump.

BOLD STEP® Anchor treads must be in place before initial set of concrete occurs.

Schedule pours to ensure quick and smooth installation.

Puddle the concrete; tamp the nosing in to ensure the concrete forms properly around the anchor.

Close stairway for 24 hours after pour.

MAINTENANCE

Epoxy surface can be swept to loosen and remove dirt. Treads can be cleaned using a general purpose industrial floor cleaner. For caked on dirt, use a stiff bristled brush with industrial cleaner. Treads can be pressure sprayed up to 1000 psi.

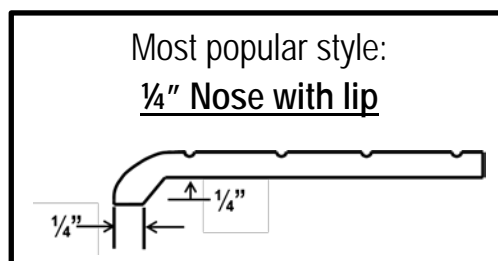
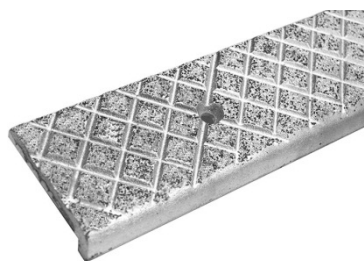
ARCHITECTURAL SPECIFICATION

All aluminum treads shown in the finish schedule or listed in this specification shall be **BOLD STEP®** stair nosings as furnished by **Sure-Foot Industries Corp.** located in Cleveland, Ohio. Products shall be constructed of heat treated exterior grade 6063 T5 aluminum and filled with chemical resistant closed cell anti-slip epoxy coating combined with mineral abrasive grits which are uniform through-out providing anti-slip properties. Shall be constructed of first quality materials and will be smooth, free of imperfections which detract from its appearance and contain no asbestos fiber. BOLD STEP® stair treads shall be a minimum of 0.25" (6.35 mm) nominal thickness, _____" (____mm) in nominal depth, _____" (____mm) in nominal length, in either single color or color combinations stated and shall conform to industry standards.

INQUIRE ABOUT BOLD STEP® CAST ABRASIVE NOSINGS FOR ARCHITECTURAL INSTALLATIONS

BOLD STEP® Cast Treads are non-corrosive, attractively designed and will virtually last the life of the building.

Available in cast aluminum and cast iron.



Sure-Foot Industries Corp. • 20260 First Ave. • Cleveland, OH • 44130
800-522-6566 • www.surefootcorp.com

BOLD STEP®

**Renovation Treads
Safety Plates
Anchor Treads**

BASIC INFORMATION

PRODUCT CONSTRUCTION

INSTALLATION

PRODUCT MAINTENANCE

BOLD STEP® is an eye catching, resilient, anti-slip product for use on steps that require an anti-slip surface. Bold Step® is an aluminum extrusion inlaid with anti-slip epoxy filler. Either used in new construction or renovation projects, our treads and nosings deliver maximum safety and durability while providing a look to compliment today's building designs. Available in 7 standard colors, Bold Step® is strong enough for industrial applications, but attractive enough to be used at your residence.

BOLD STEP® is created using heat treated, exterior grade 6063 T5 aluminum. Our proprietary blend of mineral abrasive grit and epoxy-filler creates an anti-slip surface available in 7 standard colors. Bold Step® is produced using materials that make the tread resistance to marring, scratches and chips. This product meets or exceeds the recommended value for slip resistance on wet and dry surfaces.

This product is made to order and ready to install upon delivery. The treads come with pre-drilled counter-sunk holes and screws can be ordered to fasten the treads to steps. The screws are 1 ¼" – 1 ½" long. For concrete applications, use stainless steel Tapcon screws. For wood applications, use #10 stainless steel wood screws. For steel applications use, stainless steel machine screws. Liquid Nail or construction adhesive should be used when installing the BOLD STEP® tread to create a gasket between the tread and the step surface. Your step surface must be level, smooth, clean and dry. Treads should not be installed when surface temperatures are below adhesive recommendations.

All materials are to be delivered to the installation location in its original packaging with label intact. Product should be stored in flat, level and dry area.

Ensure that the step surface is flat, smooth and level before installing the treads. You will need a center punch, hammer, drill, drill bit, adhesive caulk, chalk line, screws and anchors. Place one tread on the top step and another tread on the bottom step. Center both treads on the steps. Take the chalk line and stretch it from the left side of the top step to the left side of the bottom step and snap it. This will offer you a placement guide line for the rest of the treads. Starting at the top step and using a tread as a template, use the center punch and mark where each pilot hole needs to be. Then remove the tread and using the drill with the bit, drill your pilot holes for the step. Tap each pilot hole as necessary. Clean off any drill shavings from the step. Turn your tread over and apply the construction adhesive. Place a ¼" bead around each hole, ¼" from the edge of the tread and in a serpentine pattern across the bottom of the tread. Line the tread up and place the tread in place. Using the drill, fasten the tread in place.

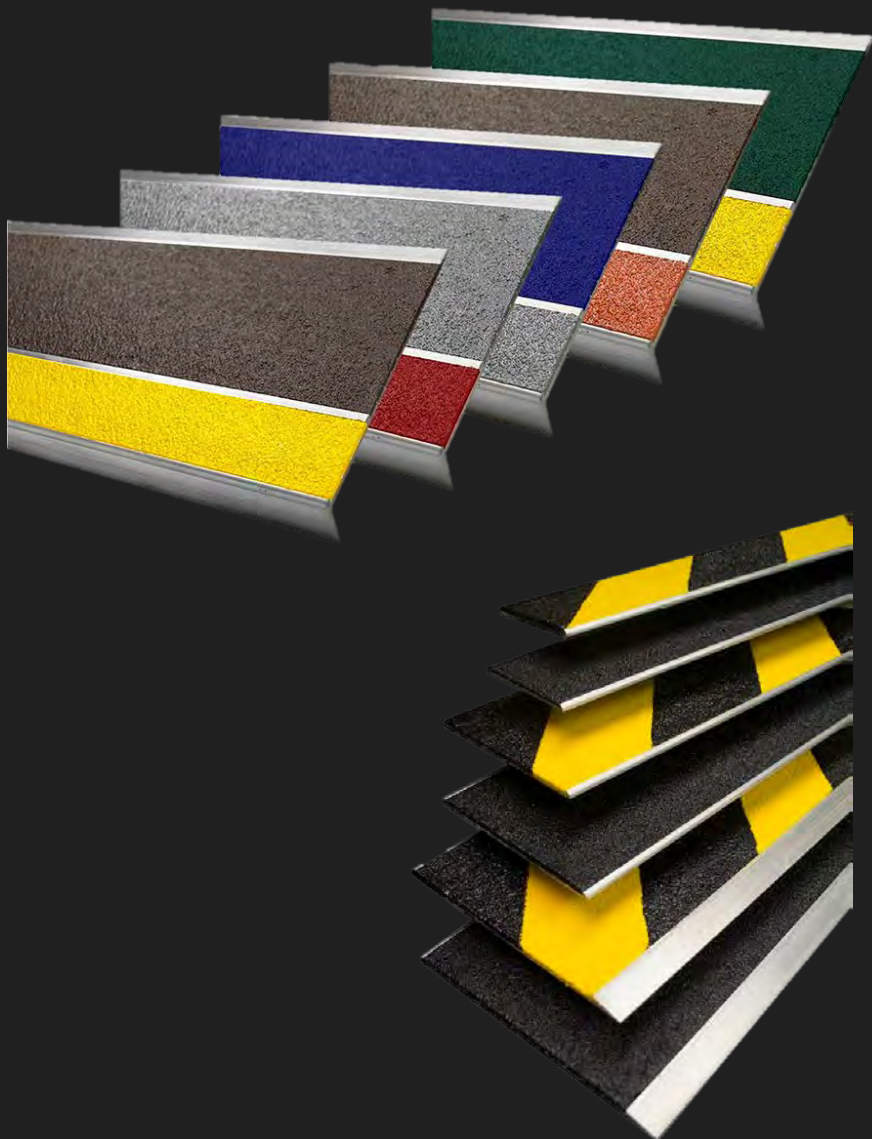
Remove and clean any adhesive off the treads immediately. Wait 72 hours before cleaning the treads with industrial cleaner and water. Surface can be swept to remove any loose dirt. Treads can be cleaned using a general purpose industrial floor cleaner. For caked on dirt use, a stiff bristled brush with the industrial cleaner. Treads can be pressure sprayed up to 1000 psi.

Aluminum Nose:

For spots, marks and scuffs, use green Scotch-Brite pad in a length-wise direction.

BOLD STEP® Aluminum Stair Treads and Safety Plates

- ASTM E 648 (NFPA 253), Critical Radiant Flux:
Class1, <1.00 W/cm²
- ASTM E 662 (NFPA 258), Specific Optical Density of Smoke Generated by
Solid Materials;
Passes <450
- ADA Visually-Impaired: Yellow and Black color combination treads meet
A.D.A. recommendations for contrasting colors
- California State Code Title 24: clearly contrasting color combinations
Passes



BOLD STEP®

SAFETY & TECHNICAL DATA



BOLD STEP® Cast Abrasive Nosings

BOLD STEP® Cast Abrasive Nosings are non-corrosive, attractively designed and will virtually last the life of the building.

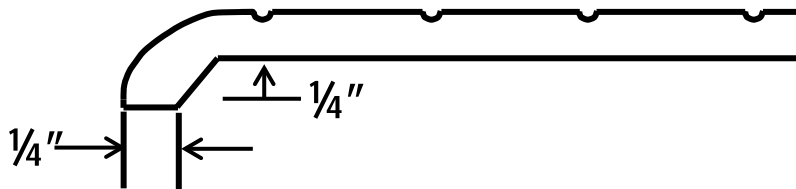
Standard Surface: Cross-hatched abrasive

Standard Anchor for Fresh Concrete: Wing anchor

Standard Anchor for Set Concrete: Expansion shield or ¼" Tapcon anchor

Standard Sizes: 3" and 4" depths; 36", 48" and 60" lengths

Most popular style: ¼" Nose with lip

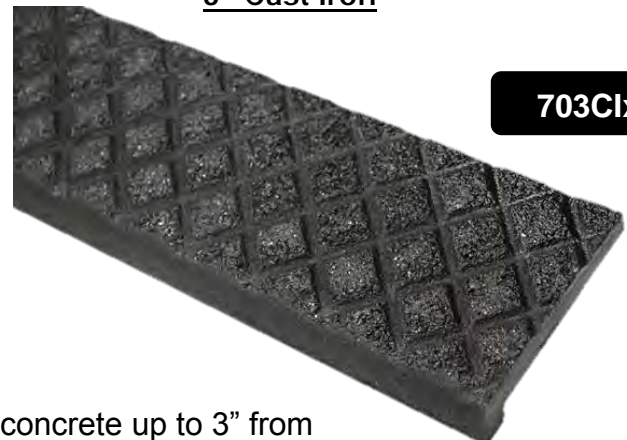
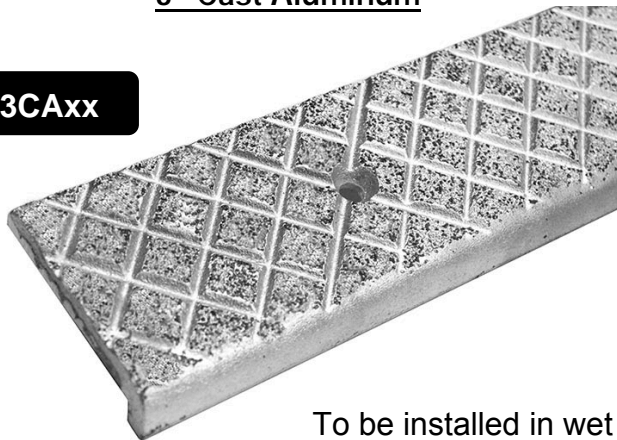


3" Cast Aluminum

3" Cast Iron

703CAxx

703CIxx



To be installed in wet concrete up to 3" from end of stairs and even with front of riser line.

Sure-Foot Industries Corp. • 20260 First Ave. • Cleveland, OH • 44130
800-522-6566 • www.surefootcorp.com

BOLD STEP®



MAINTENANCE

Surface can be swept to remove and loosen dirt. Cast nosings can be cleaned using a general purpose industrial floor cleaner. For encrusted dirt, use a stiff bristled brush with industrial cleaner. Cast Nosings can be pressure sprayed up to 1000 psi.

ARCHITECTURAL SPECIFICATION

All castings will be of uniform quality, free from holes, shrinkage defects, swells, cracks, or other defects. Treads will be true to pattern. Casting material will be of high quality iron or aluminum. Castings will be free of fins, burrs and slag. Cast iron will have one coat of black paint, aluminum will have a natural sand cast finish.

Surface will have silicon carbide abrasive, a minimum of 2.25 ounces per square foot to a minimum of 1/32 of an inch.

Fasteners

Curves

Miters

Shipping

Fresh Concrete: Wing anchor included

Set Concrete: Expansion shield or ¼" Tapcon anchor (specify)

NOT available on cast nosings

Add \$10.00 for each miter cut

FOB Cleveland

INQUIRE ABOUT BOLD STEP® ANCHOR NOSINGS & TREADS FOR ARCHITECTURAL INSTALLATIONS

BOLD STEP® Anchor Systems can be used for poured and precast concrete, steel-pan cement filled stairs and terrazzo stairs.

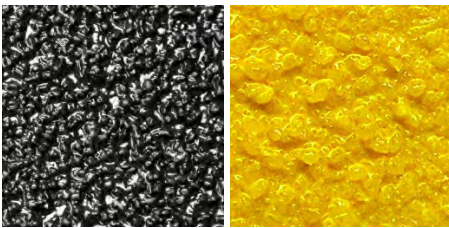


Sure-Foot Industries Corp. • 20260 First Ave. • Cleveland, OH • 44130
800-522-6566 • www.surefootcorp.com

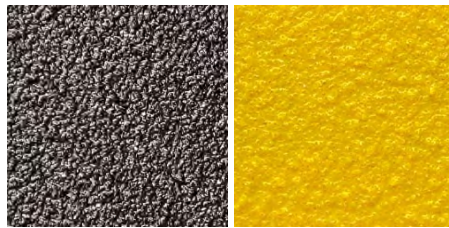
Grit-Coated Step Covers & Walkways

Grit-Coated Step Cover & Walkway applications provide slip resistance, durability and a permanent anti-slip solution. Fiberglass step covers and panels are lightweight and ideal for use on structurally sound flooring.

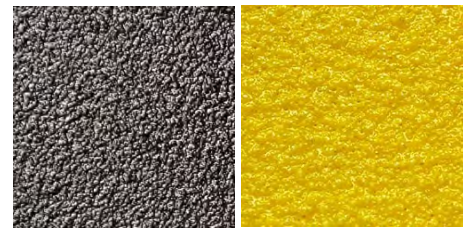
Grit-Coated Step Covers & Walkways are coated with a proprietary blend of mineral abrasive epoxy grit. Any surfaces such as inclines, floors and steps can be covered. Step Covers and Walkways are available in three distinct grit coating options: Heavy Duty, Medium and Fine.



Heavy Duty

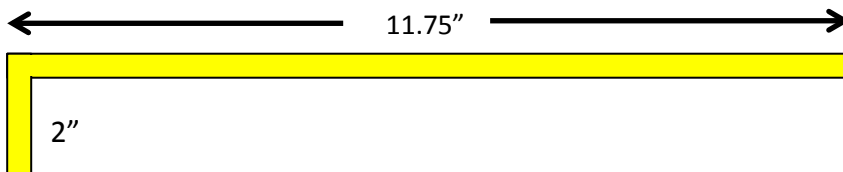


Medium

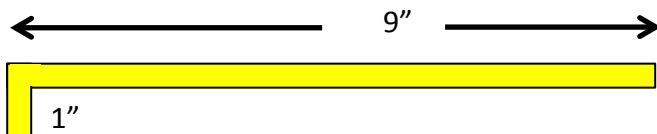


Fine

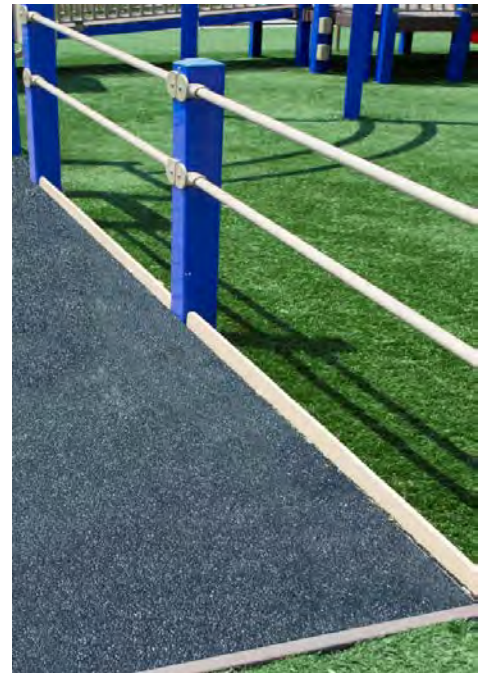
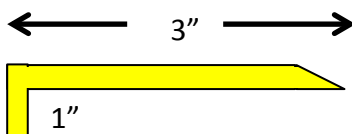
11.75" Step Cover



9" Step Cover



3" Step Cover



Heavy Duty Grit-Coated Fiberglass Panel



MAINTENANCE

Epoxy surface can be swept to loosen and remove dirt. Step covers and walkways can be cleaned using a general purpose industrial floor cleaner. For caked on dirt, use a stiff bristled brush with the industrial cleaner. Step covers and panels can be pressure sprayed up to 1000 psi.

FIBERGLASS PANEL SPECIFICATIONS

Mineral abrasive epoxy grit-coatings are applied over Thermoset Polyester Fiber Reinforced Polymer Panels. Prior to grit-coating, panels are 0.125" thick.

GRIT-COATED FIBER GLASS STEP COVERS	
*Sure-Foot Item #	Grit Type
9N12xxxXxxxx- -H	Heavy Duty
9N12xxxXxxxx- -M	Medium
GRIT-COATED FIBER GLASS WALKWAYS	
9F12xxxXxxxx- -M	Medium
*4 open spaces denotes the length & width (i.e. 48" x 96" Medium = 9F12048x0096M)	

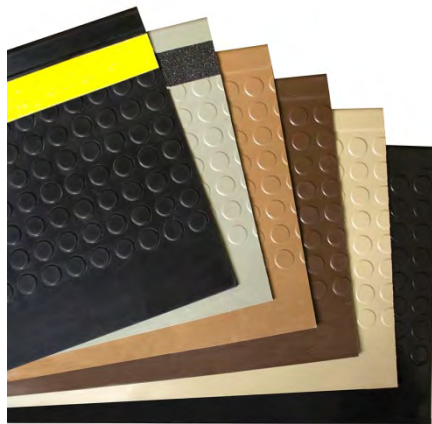


Rubber & Vinyl Stair Treads

Rubber and Vinyl Stair Treads provide safe interior stair coverings in any building with pedestrian traffic. Ideal for steps where aesthetics and fire safety are prime prerequisites.

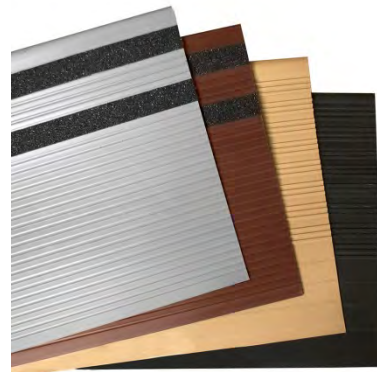
Each design is easy to clean and provides for safer pedestrian traffic.

Economical and attractive, Rubber and Vinyl Stair Treads are a long-wearing resilient safety solution. Created using a top quality compound, Rubber and Vinyl Stair Treads add safety and durability, lessen foot traffic noise and offer ease of cleaning on any stairway. Two rubber designs and one vinyl design are available:
Modern and Heavy Duty (Rubber) and General (Vinyl).



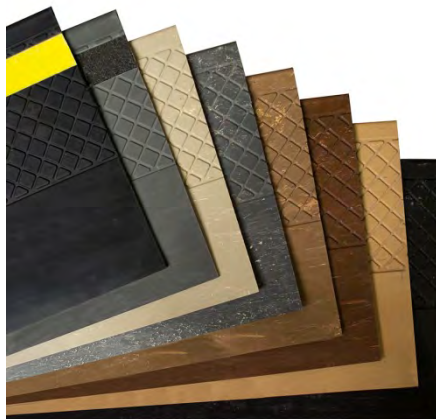
MODERN

Rubber Stair Tread



GENERAL

Vinyl Stair Tread



HEAVY DUTY

Rubber Stair Tread



INSTALLATION

Begin installation by spreading adhesive on the stair step completely covering the surface and the nosing. If using contact adhesive, apply adhesive to bottom of rubber stair tread and completely underneath nosing. Set the rubber stair tread into its proper position on the step. Begin at the nosing and push toward the riser as firmly and tightly as possible. Roll newly installed tread with hand roller to insure that tread is fitted tightly against the step nosing.

MAINTENANCE

Do not wash or apply any surface treatments for about one week after installation to allow sufficient time for the stair treads to become tightly bonded to the steps. Surface can be cleaned with mild detergent cleaner. Vacuum, mop or squeegee detergent from the stair tread. Do not use dusters or mops treated with mineral oil or other petroleum products. Periodically mop treads using 5% solution of liquid chlorine bleach in water.

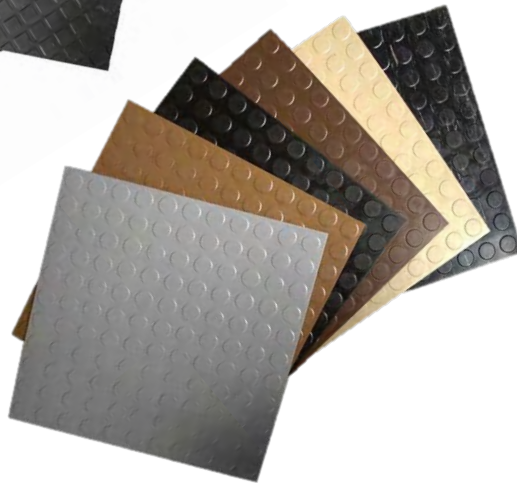
ARCHITECTURAL SPECIFICATION

Treads shall have a sanded back for proper adhesion, contain no asbestos; molded of top quality compound; free of objectionable odors or imperfections which might impair service.

Select standard length of: 36", 42", 48", 54", 60" or 72". Select standard colors.



Heavy Duty 2' x 2' Tiles



Modern 2' x 2' Tiles

MASTER STOP Safety Tiles

MASTER STOP Safety Tiles provide an anti-slip and anti-fatigue flooring while allowing you to rise above slippery surfaces.

With an extremely durable and chemical resistant grid design, safety tiles insure maximum drainage and safe footing. Tiles are made from recycled PVC plastic, making them ideal for any work environment that has chemical or water exposure. Safety tiles are resistant to most industrial chemicals such as brake fluid, transmission fluid and petroleum oil.

MAINTENANCE

Clean with hose or low-pressure power washer. Bleach or industrial cleaners are acceptable.

SPECIFICATIONS

Master Stop Safety Tiles are 12" x 12" interlocking squares. Tiles are 3/4" thick with tabs (male) and slots (female).



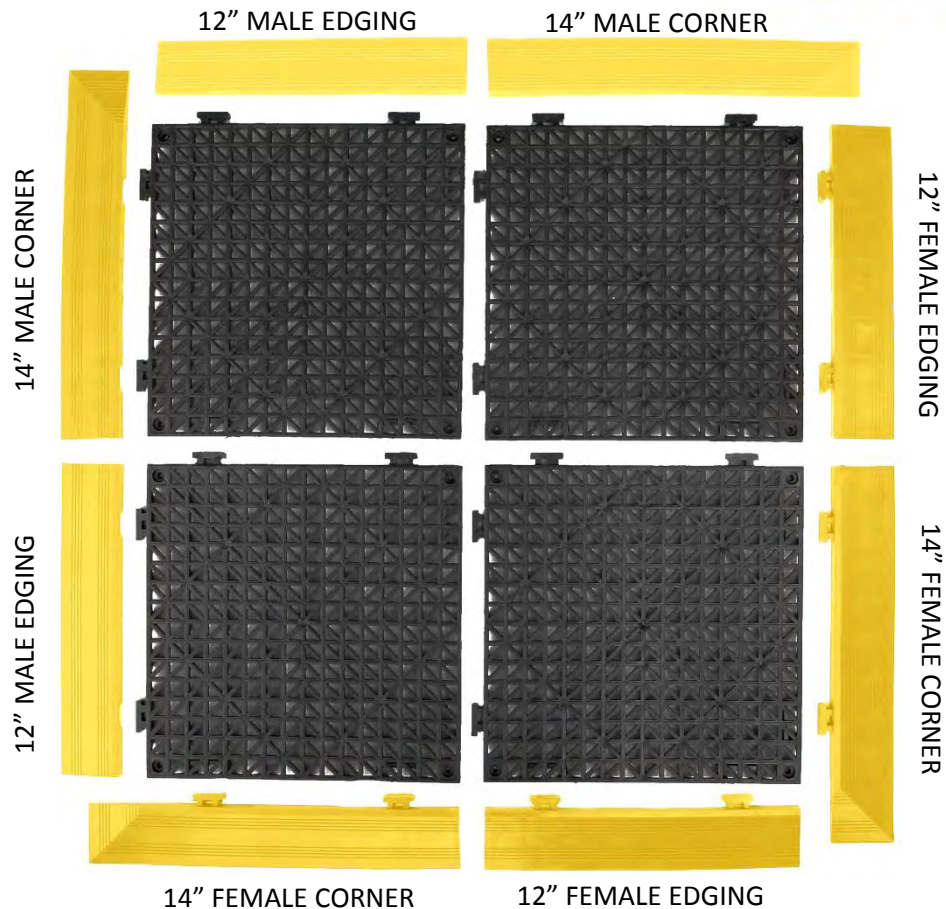
Several colors available with or without grit application



GRIT-COATED MASTER STOP TILES & RAMPS			
Sure-Foot Item #	Description	Case Pack	Case Weight
96120	12" x 12" Black	24	40#
96108	12" x 12" Yellow	24	40#
96208	2" End Ramp Yellow Male	12	8#
96308	2" End Ramp Yellow Female	12	8#
96408	2" Corner Ramp Yellow Male	12	9#
96508	2" Corner Ramp Yellow Female	12	9#
96220	2" End Ramp BLK Male	12	8#
96320	2" End Ramp BLK Female	12	8#
96420	2" Corner Ramp BLK Male	12	9#
96520	2" Corner Ramp BLK Female	12	9#
Yellow and black tiles available in uncoated finish • Coated and uncoated 6" transition ramps available			

Sure-Foot Industries Corp. • 20260 First Ave. • Cleveland, OH • 44130
800-522-6566 • www.surefootcorp.com

MASTER STOP



INSTALLATION

- No tools or adhesives are required for assembly
- Each interlocking 12" x 12" tile has two male side (tabs) and two female sides (slots). Male sides and female sides are at right angles to each other
- To assemble tiles, male side (tab) inserts into female side (slot)
- Male and female corner pieces are 14" long. Each corner requires only one corner piece. When figuring your needs, corner pieces overlap in a clockwise direction
- Order male edging for female side of tile and female edging for male side of tile

NOTE: There are not inside corners. A mitered cut is required.

AMERICAN MADE



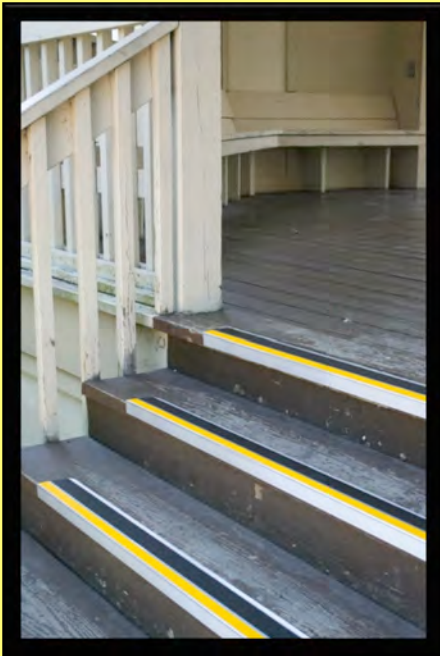
AMERICAN OWNED

Sure-Foot Industries Corp. • 20260 First Ave. • Cleveland, OH • 44130

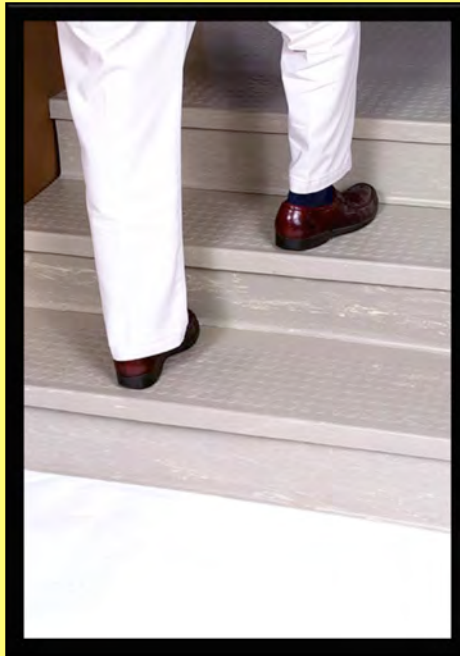
800-522-6566 • www.surefootcorp.com



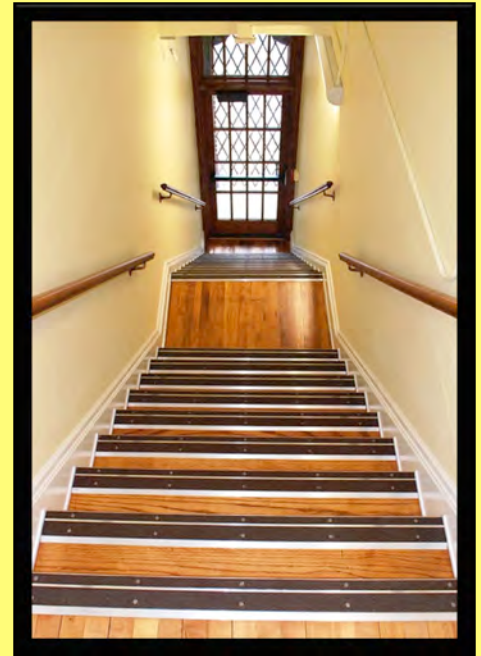
Product Installation Photos



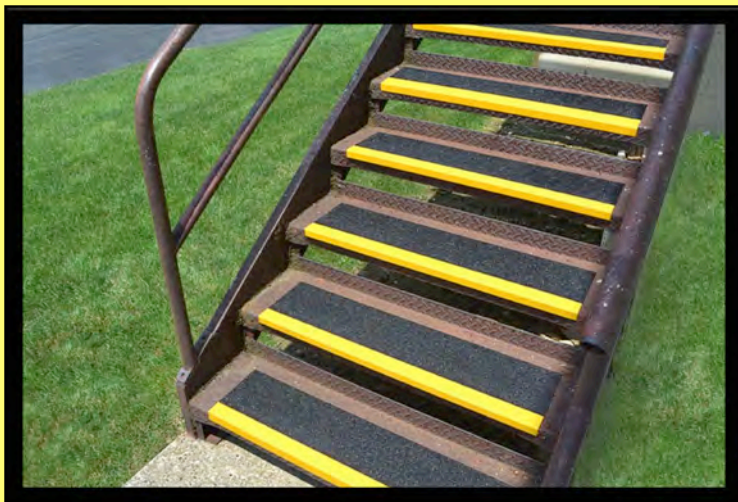
BOLD STEP®
Renovation Treads
Exterior Installation



Rubber Stair Treads
Interior Installation



BOLD STEP®
Renovation Treads
Interior Installation



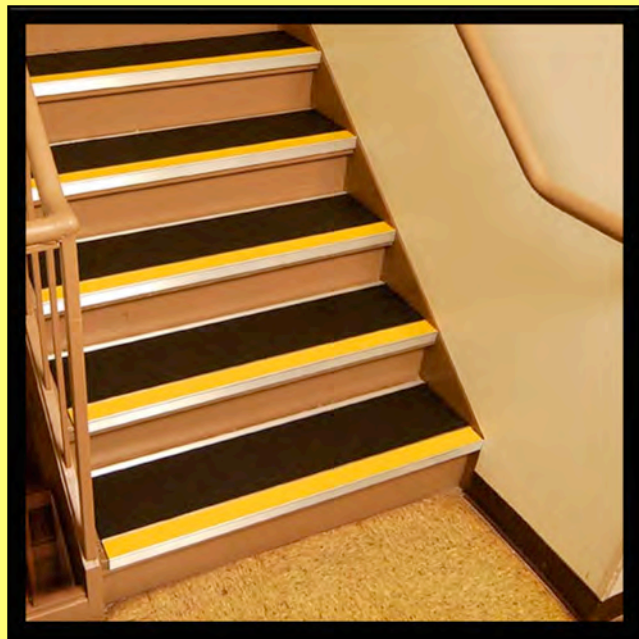
Fiber Glass Step Covers
Exterior Installation



Master Stop™ Tapes
Factory Installation



BOLD STEP® Safety Plates
Exterior Installation



BOLD STEP® Renovation Treads
Interior Installation



Fiber Glass Step Covers
Interior Installation



Master Stop™ Tapes
Exterior Installation

AMERICAN MADE



FOR OVER 30 YEARS

PRODUCT LINE:

MASTER STOP TAPES

MASTER STOP SPECIALTY TREADS

BOLD STEP®

Renovation Stair Treads

Safety Plates

Cast Abrasive Nosings

Anchor Nosings & Treads

MASTER STOP TILES

RUBBER STAIR TREADS

GRIT COATED STEP COVERS &
PANELS

Sure-Foot Industries Corporation

20260 First Avenue Cleveland, Ohio 44130

(440) 234-4446 • (800) 522-6566 • Fax: (440) 234-9098

www.surefootcorp.com

AMERICAN MADE



AMERICAN OWNED