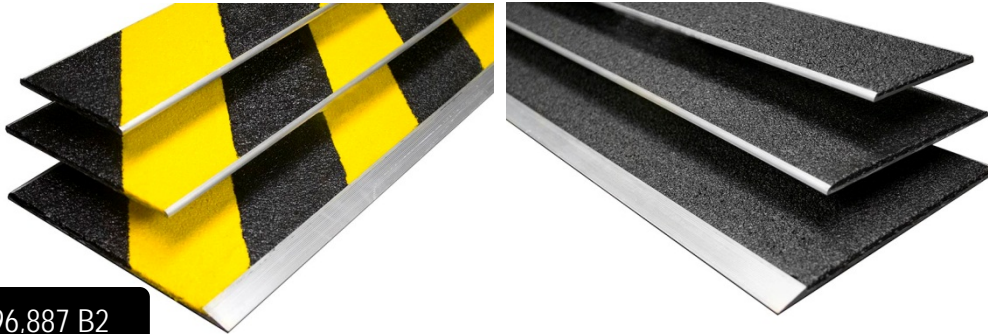


BOLD STEP® Safety Plates

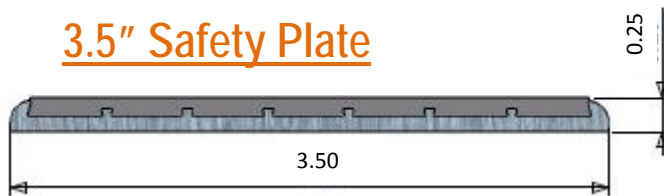
BOLD STEP® Safety Plates are a permanent, attractive solution for worn problem areas, dangerous steps and slip hazards. Ideal for use on interior or exterior steps and landings.



Patent US 6,996,887 B2

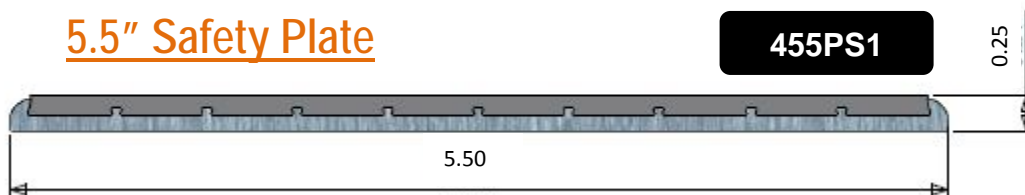
BOLD STEP® is the perfect application for new and existing structures made of wood, concrete, or metal. BOLD STEP® is produced using extruded heat treated exterior grade 6063 T5 aluminum. Our proprietary blend of mineral abrasive grit and epoxy-filler creates an anti-slip surface resistant to marring, scratches and chips.

3.5" Safety Plate



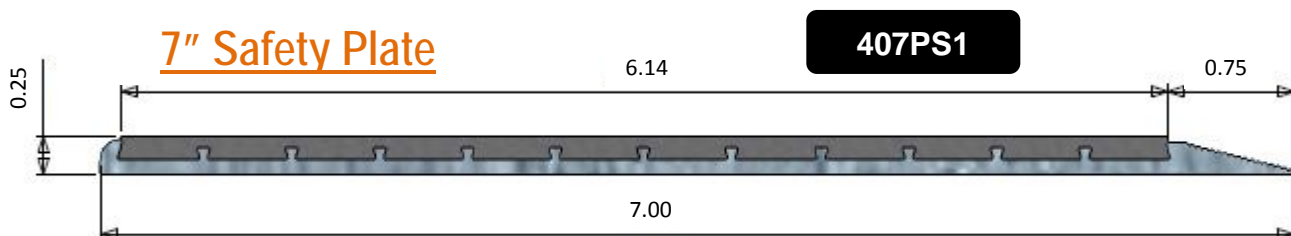
435PS1

5.5" Safety Plate



455PS1

7" Safety Plate



407PS1

Sure-Foot Industries Corp. • 20260 First Ave. • Cleveland, OH • 44130
800-522-6566 • www.surefootcorp.com

BOLD STEP®



Sure-Foot Part #	Description	
435PS1	3.5" Safety Plate	Specify Color & Length up to 120"
455PS1	5.5" Safety Plate	Specify Color & Length up to 120"
407PS1	7" Safety Plate	Specify Color & Length up to 120"
GREY • RED • BROWN • YELLOW • GLOW • BLACK • BLUE • DARK GREEN • HAZARD		

INSTALLATION

BOLD STEP® is made to order and ready to install upon delivery. All plates come with pre-drilled counter-sunk holes. For concrete and wood applications, use stainless steel #10 screws. For steel applications, use a stainless steel machine screw-- all screws should be 1 ¼" – 1 ½" in length. Commercial adhesive such as Liquid Nail should be used when installing the BOLD STEP® plates to create a gasket between the tread and the step surface. Surface must be level, smooth, dry and clean of debris. Plates should not be installed when surface temperatures are below adhesive recommendations.

MAINTENANCE

Surface can be swept to remove and loosen dirt. Plates can be cleaned using a general purpose industrial floor cleaner. For encrusted dirt, use a stiff bristled brush with industrial cleaner. Treads can be pressure sprayed up to 1000 psi. Aluminum: For spots, marks and scuffs, use green Scotch-Brite pad. Polish in length-wise direction.

ARCHITECTURAL SPECIFICATION

All aluminum plates shown in the finish schedule or listed in this specification shall be **BOLD STEP®** Safety Plates as furnished by **Sure-Foot Industries Corp.** located in Cleveland, Ohio. Products shall be constructed of heat treated exterior grade 6063 T5 aluminum and filled with chemical resistant closed cell anti-slip epoxy coating combined with mineral abrasive grits which are uniform throughout providing anti-slip properties. Shall be constructed of first quality materials and will be smooth, free of imperfections which detract from its appearance and contain no asbestos fiber. BOLD STEP® Safety Plates shall be 0.25" (6.35 mm) nominal thickness, _____" (____mm) in nominal depth, _____" (____mm) in nominal length, in either single color or color combinations stated and shall conform to industry standards.

Sure-Foot Industries Corp. • 20260 First Ave. • Cleveland, OH • 44130
800-522-6566 • www.surefootcorp.com